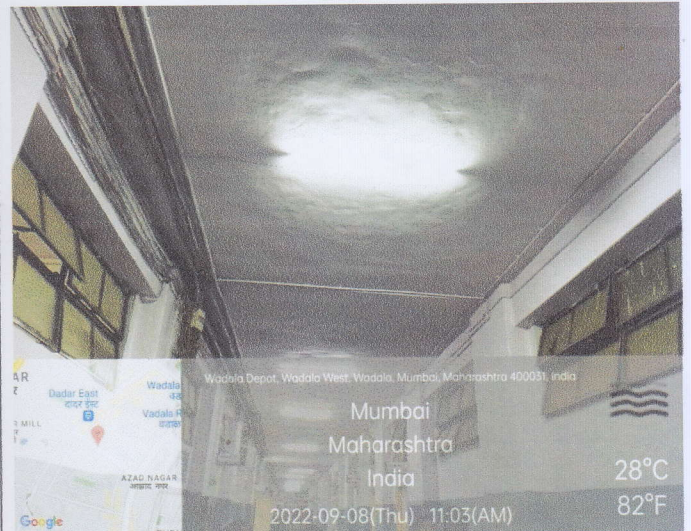
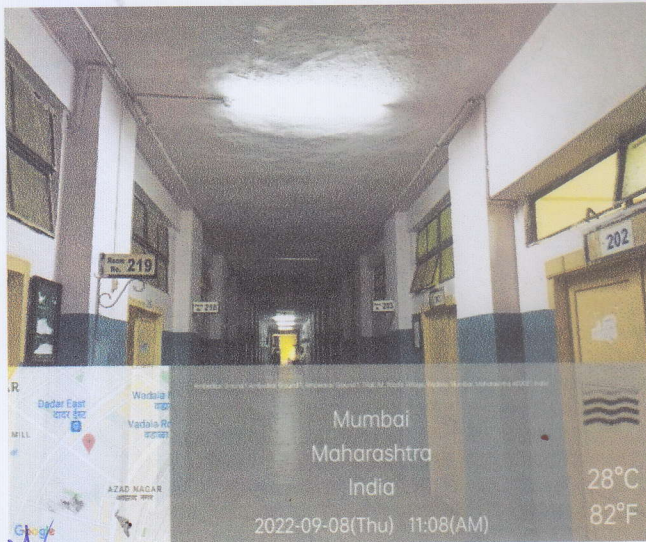
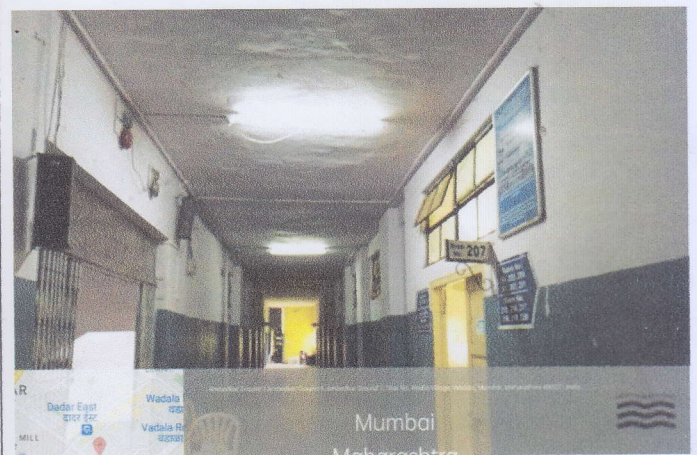
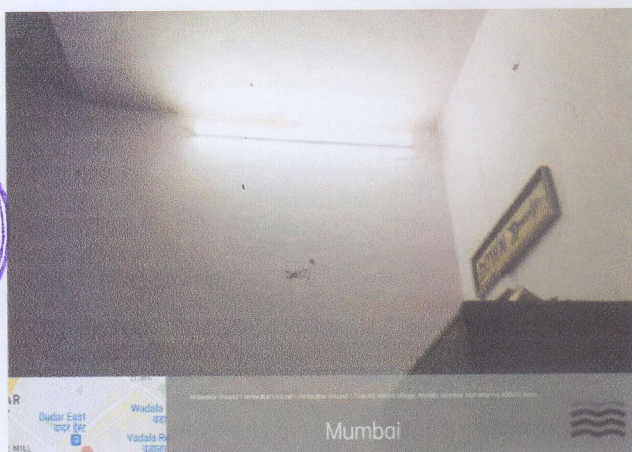


People's Education Society's  
Dr.Ambedkar College of Commerce & Economics, Wadala, Mumbai

- 7.1.2- The Institution has facilities for alternate sources of energy and energy conservation measures - Use of LED bulbs/ power efficient equipment



Principal  
Dr Ambedkar College of  
Commerce and Economics  
Wadala, Mumbai - 400 031







Essay writing Competition by Env. Studies department



# Activity

## Dry Waste Collection Drive



- Newspapers/Books
- Biscuit, Chips and other food packets
- Milk/Buttermilk/curd packets (washed, cleaned and dried)
- Terra packs
- Oil and detergent packets
- Soap bar boxes and packets
- Shampoo bottles
- Water Bottles
- Glass Bottles



*[Signature]*  
Principal  
Dr. Ambedkar College of  
Commerce & Economics  
Wadala, Mumbai - 400 031.